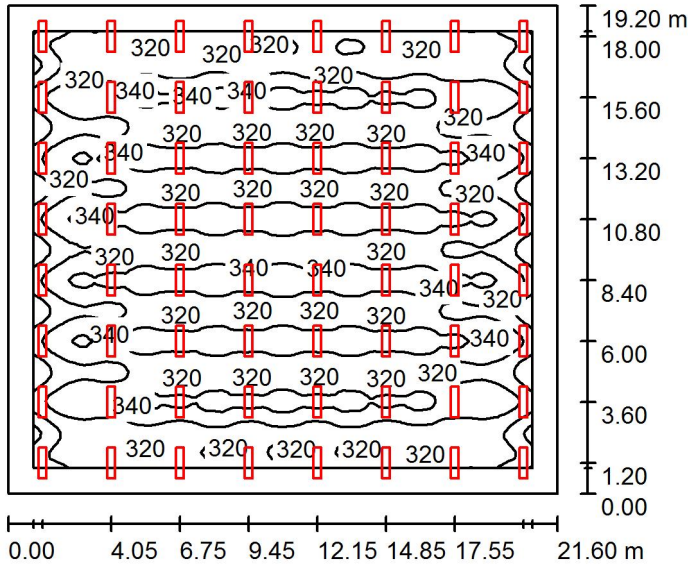


Green Wire Consulting Pty Ltd  
 PO Box 4039  
 Eaglemont Victoria 3084

Operator Karl Olsen  
 Telephone 0448 981 327  
 Fax  
 e-Mail karl.olsen@greenwire.com.au

### Open-plan Office 2.4x2.7m(4tiles) spacings - 2.7mAFL / Summary



Height of Room: 2.700 m, Mounting Height: 2.700 m, Light loss factor: 0.80

Values in Lux, Scale 1:298

Surface	$\rho$ [%]	$E_{av}$ [lx]	$E_{min}$ [lx]	$E_{max}$ [lx]	$u_0$
Workplane	/	327	273	355	0.837
Floor	20	301	156	357	0.520
Ceiling	70	61	47	72	0.767
Walls (4)	50	133	58	190	/

**Workplane:**

Height: 0.700 m  
 Grid: 86 x 98 Points  
 Boundary Zone: 1.000 m

Illuminance Quotient (according to LG7): Walls / Working Plane: 0.391, Ceiling / Working Plane: 0.187.  
 Proportion of points with less than 400 lx (for IEQ-7): 100.00%.

**Luminaire Parts List**

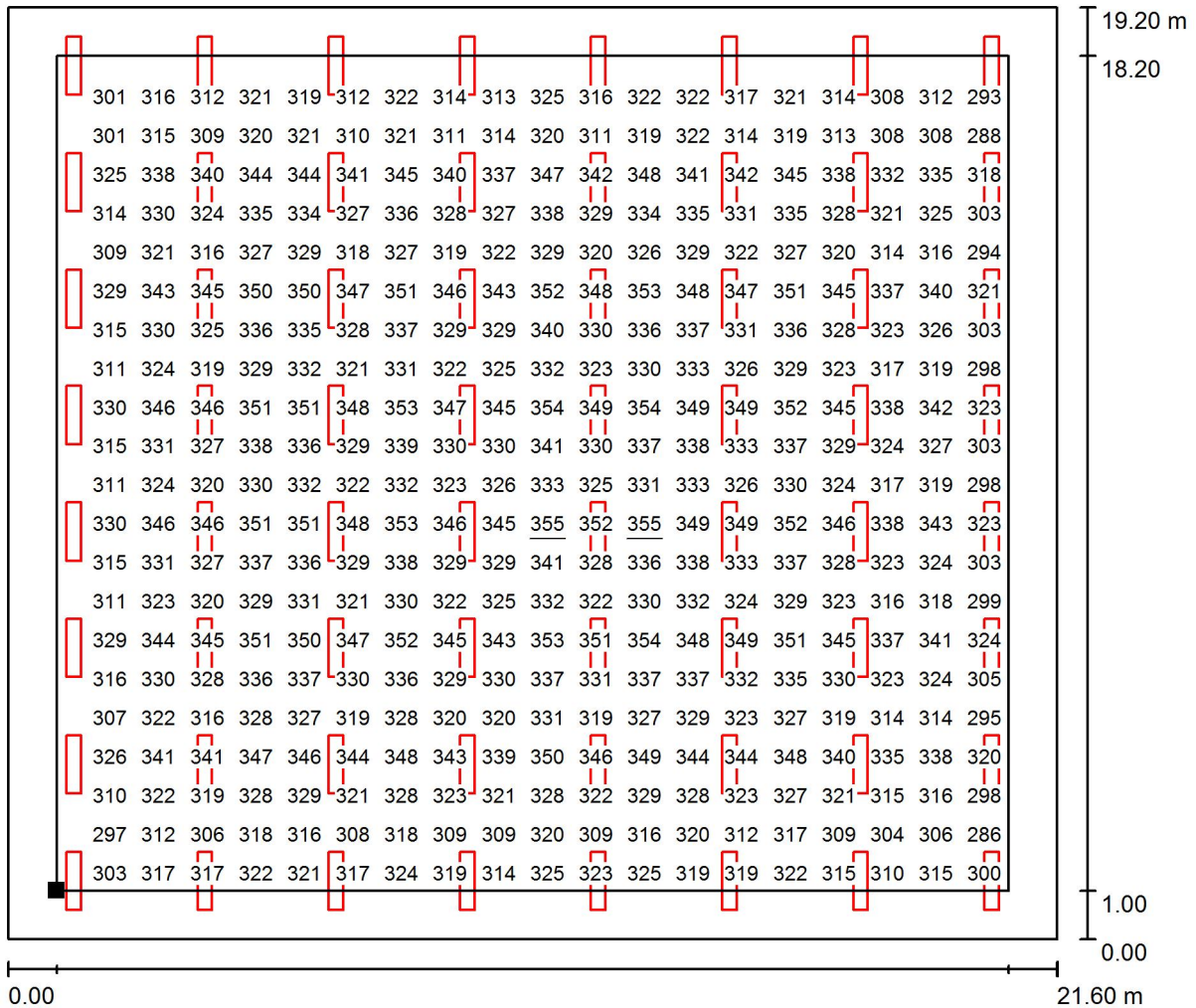
No.	Pieces	Designation (Correction Factor)	$\Phi$ (Luminaire) [lm]	$\Phi$ (Lamps) [lm]	P [W]
1	64	Australume Pty. Ltd., Moorebank. NSW. 2170. OMG32002L Australume 1200 x 300 Ombre T-Bar Grid LED Troffer. Product ID: OMG32002L. Tested at 240 V 50 Hz. (1.000)	2400	2400	21.3
Total:			153586	153586	1363.2

Specific connected load: 3.29 W/m<sup>2</sup> = 1.01 W/m<sup>2</sup>/100 lx (Ground area: 414.72 m<sup>2</sup>)

Green Wire Consulting Pty Ltd  
 PO Box 4039  
 Eaglemont Victoria 3084

Operator Karl Olsen  
 Telephone 0448 981 327  
 Fax  
 e-Mail karl.olsen@greenwire.com.au

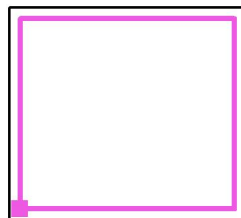
**Open-plan Office 2.4x2.7m(4tiles) spacings - 2.7mAFL / Workplane / Value Chart (E)**



Values in Lux, Scale 1 : 155

Not all calculated values could be displayed.

Position of surface in room:  
 Working plane with 1.000 m  
 Boundary Zone  
 Marked point:  
 (1.000 m, 1.000 m, 0.700 m)



Grid: 86 x 98 Points

$E_{av}$ [lx]	$E_{min}$ [lx]	$E_{max}$ [lx]	$u_0$	$E_{min} / E_{max}$
327	273	355	0.837	0.771